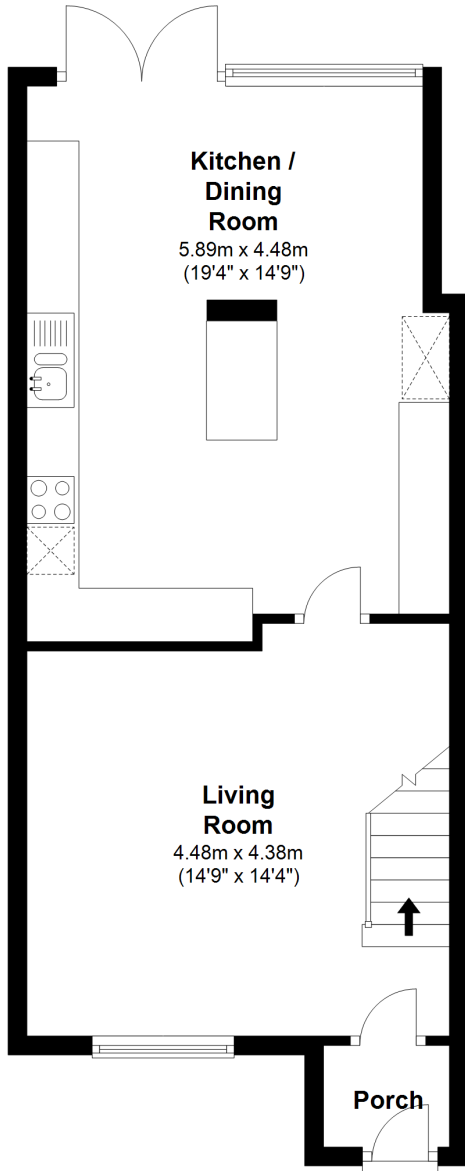


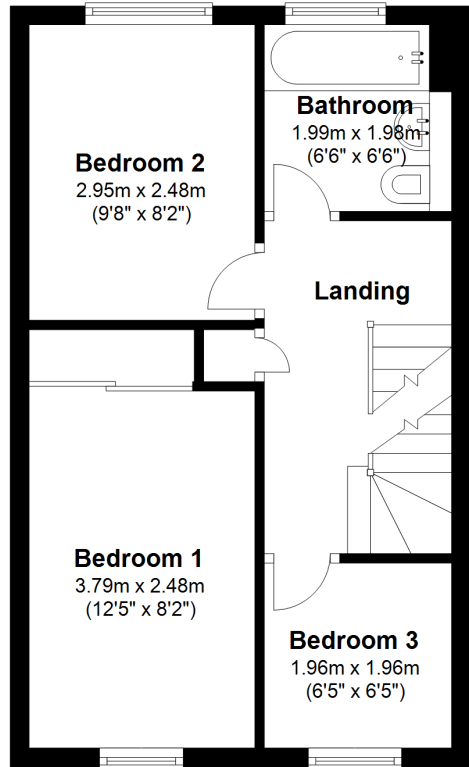
Ground Floor

Approx. 46.1 sq. metres (496.1 sq. feet)



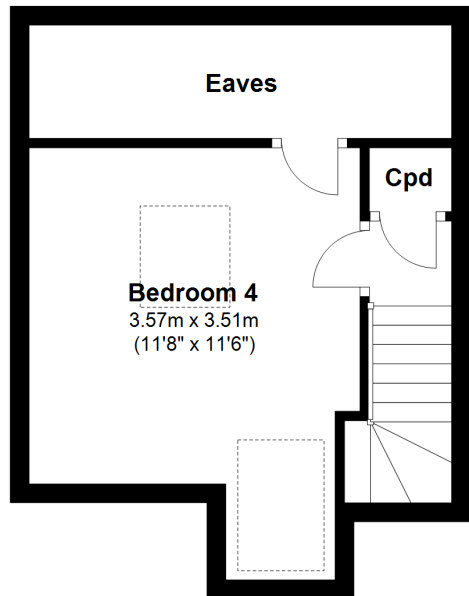
First Floor

Approx. 34.4 sq. metres (370.7 sq. feet)



Second Floor

Approx. 23.2 sq. metres (250.0 sq. feet)



Total area: approx. 103.8 sq. metres (1116.8 sq. feet)

Drawings are for guidance only
Plan produced using PlanUp.